

Strain Relief LT Series

Flexible Metallic Conduit Grips

APPLICATIONS

- For indoor and outdoor use that requires a flexible liquidtight conduit connection.
- Prevents conduit pullout due to stress, tension, strain, vibration or movement.
- Provides an effective seal against contaminants that could lead to an electrical short.
- Ideal for food processing equipment, air conditioning units, machine tools, pulp and paper mills, and refineries.



Liquidtight Flexible Metal Conduit

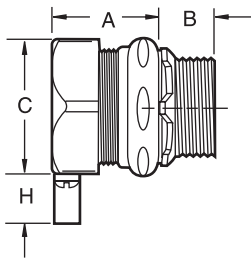
FEATURES

- Gripping action increases in direct proportion to the amount of tension applied to cable.
- Single-weave, stainless steel wire mesh provides uniform arc of bend and corrosion resistance.
- High quality, rugged steel and cast metal fittings available in 3/8" (0.95cm) through 2" (5.08cm).
- Available with straight body, 45° and 90° angle, male thread, straight female thread, and chase connector.
- Thermoplastic sealing gasket effectively seals out water, oil, dust and dirt.

Straight Connector

Conduit Size	Mesh Length M	Dimensions given in inches (cm)				Catalog No.	
		A	B	C	H	(non-insulated)	(insulated)
3/8	6 7/16 (16.35)	1 7/8 (4.76)	1 1/16 (1.75)	1 1/4 (3.18)	3/4 (1.91)	LT000	LTB000
1/2	6 1/8 (15.56)	1 7/8 (4.76)	3/4 (1.91)	1 7/16 (3.65)	3/4 (1.91)	LT100	LTB100
3/4	6 5/16 (16.03)	1 3/16 (3.02)	3/4 (1.91)	1 5/8 (4.13)	3/4 (1.91)	LT200	LTB200
1	8 3/16 (20.80)	1 7/16 (3.66)	7/8 (2.22)	1 15/16 (4.92)	3/4 (1.91)	LT300	LTB300
1 1/4	10 3/4 (27.31)	1 9/16 (3.97)	1 (2.54)	2 3/8 (6.03)	3/4 (1.91)	LT400	LTB400
1 1/2	11 13/16 (30.00)	1 9/16 (3.97)	1 1/8 (2.86)	2 3/4 (6.99)	3/4 (1.91)	LT500	LTB500
2	14 7/16 (36.67)	1 13/16 (4.60)	1 1/8 (2.86)	3 5/16 (8.41)	3/4 (1.91)	LT600	LTB600

M = Mesh length at nominal diameter



INDUSTRIAL

Q-6
WIRE MESH
GRIPS

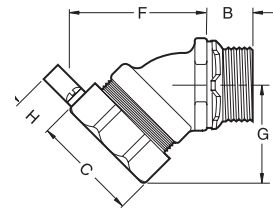
Strain Relief LT Series

Flexible Metallic Conduit Grips

45° Connector

Conduit Size	Mesh Length M	Dimensions given in inches (cm)					Catalog No.	
		B	C	F	G	H	(non-insulated)	(insulated)
3/8	6 7/16 (16.35)	11/16 (1.75)	1 1/4 (3.18)	1 5/8 (4.13)	1 7/16 (3.65)	3/4 (1.91)	LT045	LTB045
1/2	6 1/8 (15.56)	3/4 (1.91)	1 7/16 (3.65)	1 11/16 (4.29)	1 7/16 (3.65)	3/4 (1.91)	LT145	LTB145
3/4	6 5/16 (16.03)	3/4 (1.91)	1 5/8 (4.13)	1 11/16 (4.29)	1 1/2 (3.81)	3/4 (1.91)	LT245	LTB245
1	8 3/16 (20.80)	7/8 (2.22)	1 15/16 (4.92)	2 3/16 (5.56)	1 13/16 (4.60)	3/4 (1.91)	LT345	LTB345
1 1/4	10 3/4 (27.31)	1 (2.54)	2 3/8 (6.03)	2 1/2 (6.35)	2 3/16 (5.56)	3/4 (1.91)	LT445	LTB445
1 1/2	11 13/16 (30.00)	1 1/8 (2.86)	2 3/4 (6.99)	3 1/8 (7.94)	2 7/16 (6.19)	3/4 (1.91)	LT545	LTB545
2	14 7/16 (36.67)	1 1/8 (2.86)	3 5/16 (8.41)	3 5/16 (8.41)	2 7/8 (7.30)	3/4 (1.91)	LT645	LTB645

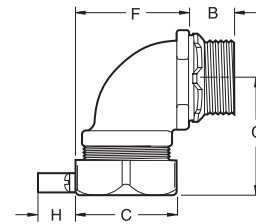
M = Mesh length at nominal diameter



90° Connector

Conduit Size	Mesh Length M	Dimensions given in inches (cm)					Catalog No.	
		B	C	F	G	H	(non-insulated)	(insulated)
3/8	6 7/16 (16.35)	11/16 (1.75)	1 1/4 (3.18)	1 5/16 (3.33)	1 3/8 (3.49)	3/4 (1.91)	LT090	LTB090
1/2	6 1/8 (15.56)	3/4 (1.91)	1 7/16 (3.65)	1 7/16 (3.65)	1 3/8 (3.49)	3/4 (1.91)	LT190	LTB190
3/4	6 5/16 (16.03)	3/4 (1.91)	1 5/8 (4.13)	1 5/8 (4.13)	1 1/2 (3.81)	3/4 (1.91)	LT290	LTB290
1	8 3/16 (20.80)	7/8 (2.22)	1 15/16 (4.92)	1 15/16 (4.92)	1 13/16 (4.60)	3/4 (1.91)	LT390	LTB390
1 1/4	10 3/4 (27.31)	1 (2.54)	2 3/8 (6.03)	2 3/8 (6.03)	2 (5.08)	3/4 (1.91)	LT490	LTB490
1 1/2	11 13/16 (30.00)	1 1/8 (2.86)	2 3/4 (6.99)	2 11/16 (6.83)	2 7/16 (6.19)	3/4 (1.91)	LT590	LTB590
2	14 7/16 (36.67)	1 1/8 (2.86)	3 5/16 (8.41)	3 3/16 (8.10)	2 11/16 (6.83)	3/4 (1.91)	LT690	LTB690

M = Mesh length at nominal diameter



Straight with Chase Connector

Conduit Size	Mesh Length M	Catalog No.	
		(non-insulated)	(insulated)
3/8	6 7/16 (16.35)	LTFC000	LTFC000
1/2	6 1/8 (15.56)	LTFC100	LTFC100
3/4	6 5/16 (16.03)	LTFC200	LTFC200
1	8 3/16 (20.80)	LTFC300	LTFC300
1 1/4	10 3/4 (27.31)	LTFC400	LTFC400
1 1/2	11 13/16 (30.00)	LTFC500	LTFC500
2	14 7/16 (36.67)	LTFC600	LTFC600

M = Mesh length at nominal diameter

Straight with Female Connector

Conduit Size	Mesh Length	Catalog No.
1/2	6 1/8 (15.56)	LTFR100
3/4	6 5/16 (16.03)	LTFR200
1	8 3/16 (20.80)	LTFR300
1 1/4	10 3/4 (27.31)	LTFR400
1 1/2	11 13/16 (30.00)	LTFR500
2	14 7/16 (36.67)	LTFR600



INDUSTRIAL

Q-7
WIRE MESH
GRIPS